



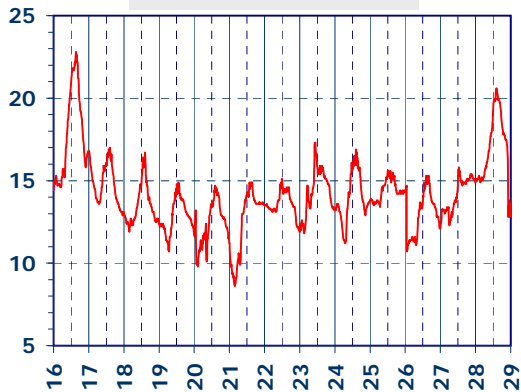
ISTITUTO DI RICERCHE SULLA COMBUSTIONE - CNR

Dati meteo rilevati presso la sede di via P. Metastasio, 17

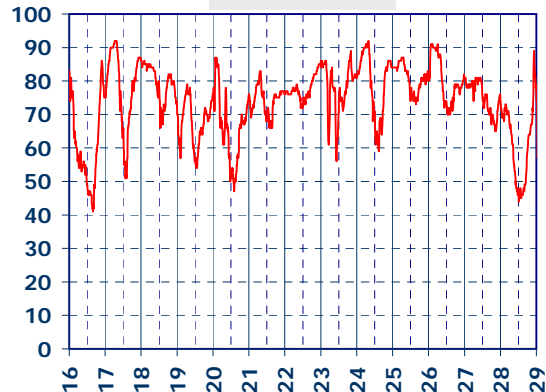
Coordinate: 40.831266, 14.19706; Altitudine 60 m

Selezione dal 15 al 29 Febbraio 2016

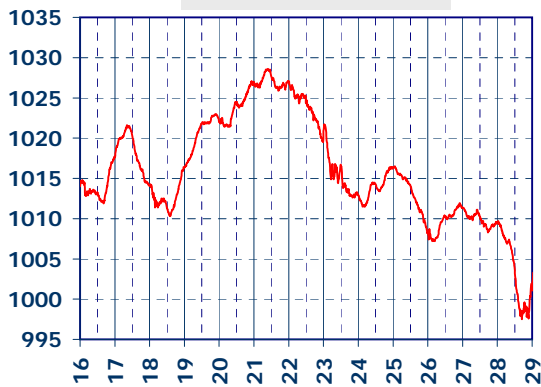
TEMPERATURA, °C



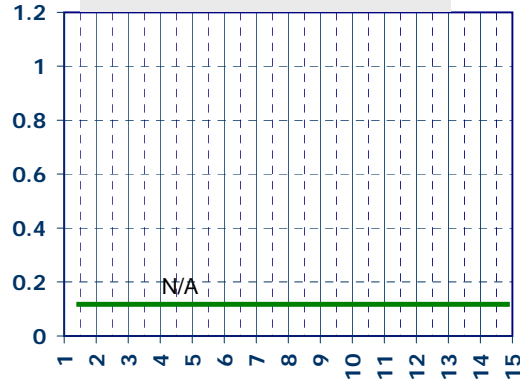
UMIDITA', %



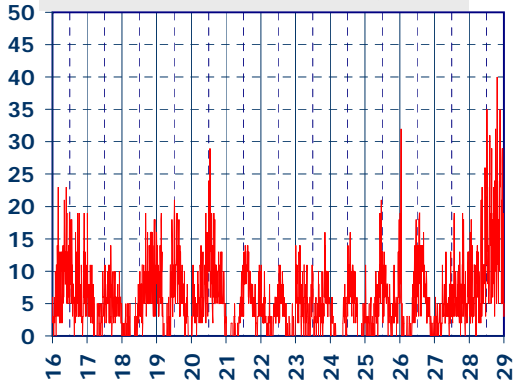
PRESSIONE, mbar



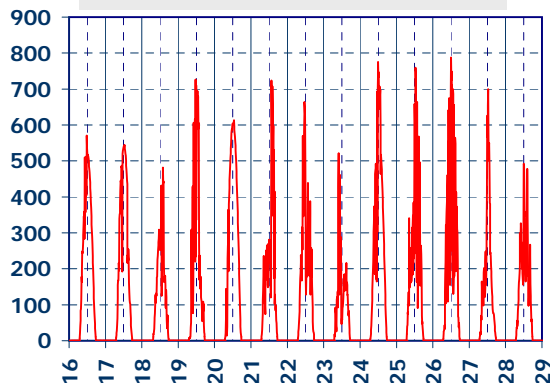
PRECIPITAZIONI, mm/ora



VELOCITA' DEL VENTO, km/h



RADIAZIONE SOLARE, W/m²



DIREZIONE DEL VENTO, gradi bussola

